

Aello 1000 – software kit

Description:

For the Aello 1000 plug in probes (Aello 1100/1400/1500) can be used one control and evaluation software. She is suitable for standard demands like quality control or also for research problems like special data evaluation. The program detects automatically the connected probe. The measurement can be executed with predefined or free chosen strategies. Different modules for data visualization, storage, treatment (mathematical, statistical), export, allow an user-friendly use.

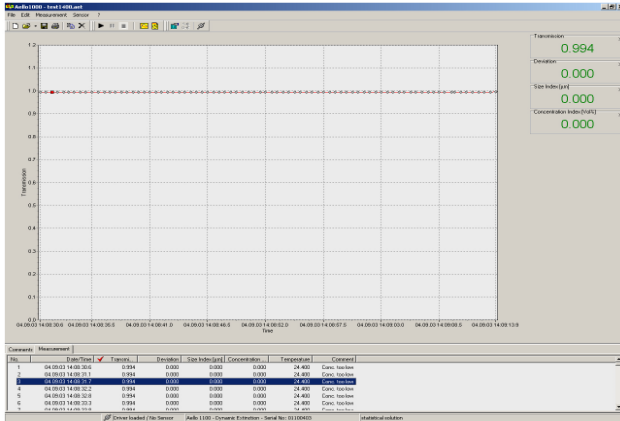


Fig. 1: User interface

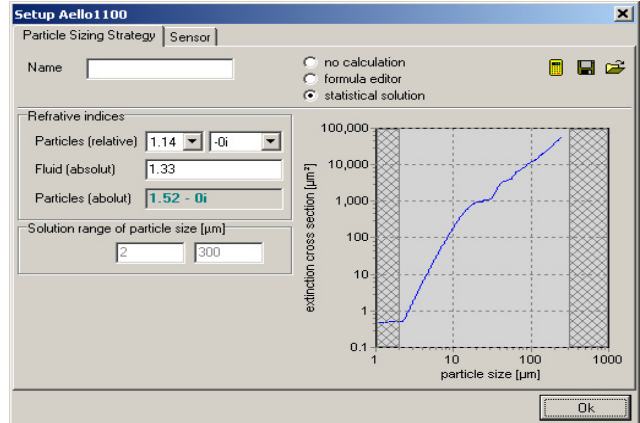


Fig. 2: Simulation of optical parameters

Features:

- sensor communication:
 - strategy selection of measurement and output – storage is possible
 - probe adjustment
- calculation:
 - online – calculation of particle size and concentration indices (depending of the connected probe)
 - editing of measured values (new calculation, statistical returns and others)
 - simulation of parameters, e.g. turbidity, particle size, concentration, refraction indices
 - trend analyses, statistic of signals
- output:
 - graphical output of the raw data and calculated values
 - print of results
 - export of data into excel
 - storage of all data as Aello-aem-file (also as text file possible)
 - automatically in between times storage for long term measurements

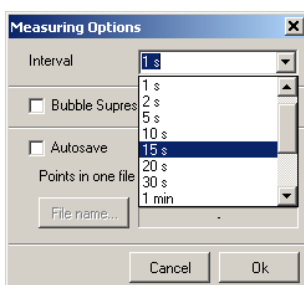


Fig. 3: Definition of measurement intervals

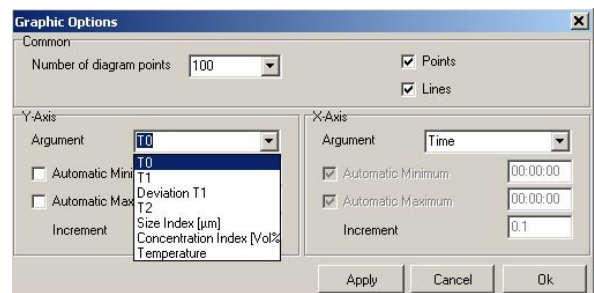


Abb. 4: Definition of the diagram layout